



FOSDEP Automatic Waste Water and Sewage Storage and Transfer Unit





Experience

With our R&D, production and implementation experience of more than 46 years in the pump technologies field, we protect you and your investments without compromising from quality with our expert sales and after sales services.

We offer complete solutions for building pump systems with our wide product range including in-line wet and dry rotor circulation pumps, vertical multi stage centrifugal pumps, horizontal single stage end suction pumps, horizontal split case pumps, waste water and drainage pumps, waste water lifting units, booster systems for residential and commercial buildings, residential fire fighting booster systems, mobile fire extinguishing and flood discharging pumps and UL listed & FM approved fire fighting pump systems complying with EN 12845, NFPA 20 standards under the brand of ETNA.

Green Engineering

By blending advanced pump features with innovative technologies, we offer high quality, reliable, energy efficient, environmentally friendly products to the industry and the end-users.

Continuing its activities with the vision of offering state of the art technology products, ETNA is preferred in prestigious projects in both Turkey and the world and is used with confidence.



Professional Solutions

With the development of industry and the gradual increase of the population, the increasing solid substance content in waste water makes it difficult to remove residential and industrial waste water. Waste water lifting, which have become obligatory to protect our natural resources, is a challenging process requiring professionalism, continuity and high performance. ETNA solutions fulfill this challenge by offering reliable services to its customers.

FOSDEP Automatic Waste Water and Sewage Storage and Transfer Unit

Fosdep automatic waste water and sewage storage and transfer units are produced for the collection and transfer of contaminated wastewater with dense solid particles that accumulate in areas below the city network wastewater line (code level). FOSDEP waste water discharge units equipped with high performance EFP DP series pumps are used indoors and outdoors with their robust, easy maintenance, odor-free design in residential and commercial applications.

ETNA is always by your side to overcome the difficulties in modern waste water applications in a safe manner with its drainage and waste water solutions that are economical, efficient, easy to use, frequent maintenance-free, safe and longlasting.

FOSDEP Automatic Waste Water and Sewage Storage and Transfer Unit



These are stainless steel waste water lifting units that are produced in line with EN 12050-1 and EN 12050-2 to discharge clean water, rain water, gray water or waste water when there is no gravity in action or to a higher sewage network.

Depending on the wastewater flow, single and double pump application is available. Pumps are not included in the price and shall be ordered according to system requirements.

Fields of Use

Suitable for residential and commercial use.

Design Properties

- Suitable for use with EFP 22D and EFP 22DP series pumps.
- 250L and 500L AISI 304 stainless steel sheet tank
- High-density polyethylene screw-top
- Waste water inlets with leak-proof gaskets DN 65 and DN 110
- PVC discharge with G2" gasket type union
- G2" manual outlet pump connection (for emergencies)
- 2 units of PG13 cable input grommets (for power cable and floater)
- Sliding rail system enabling easy assembly and maintenance of the pump, pump connector DN50 flange and o-ring
- Pump immersion and pulling ring and chain

Accessories

- Ball Check Valve
- Electrical Panel



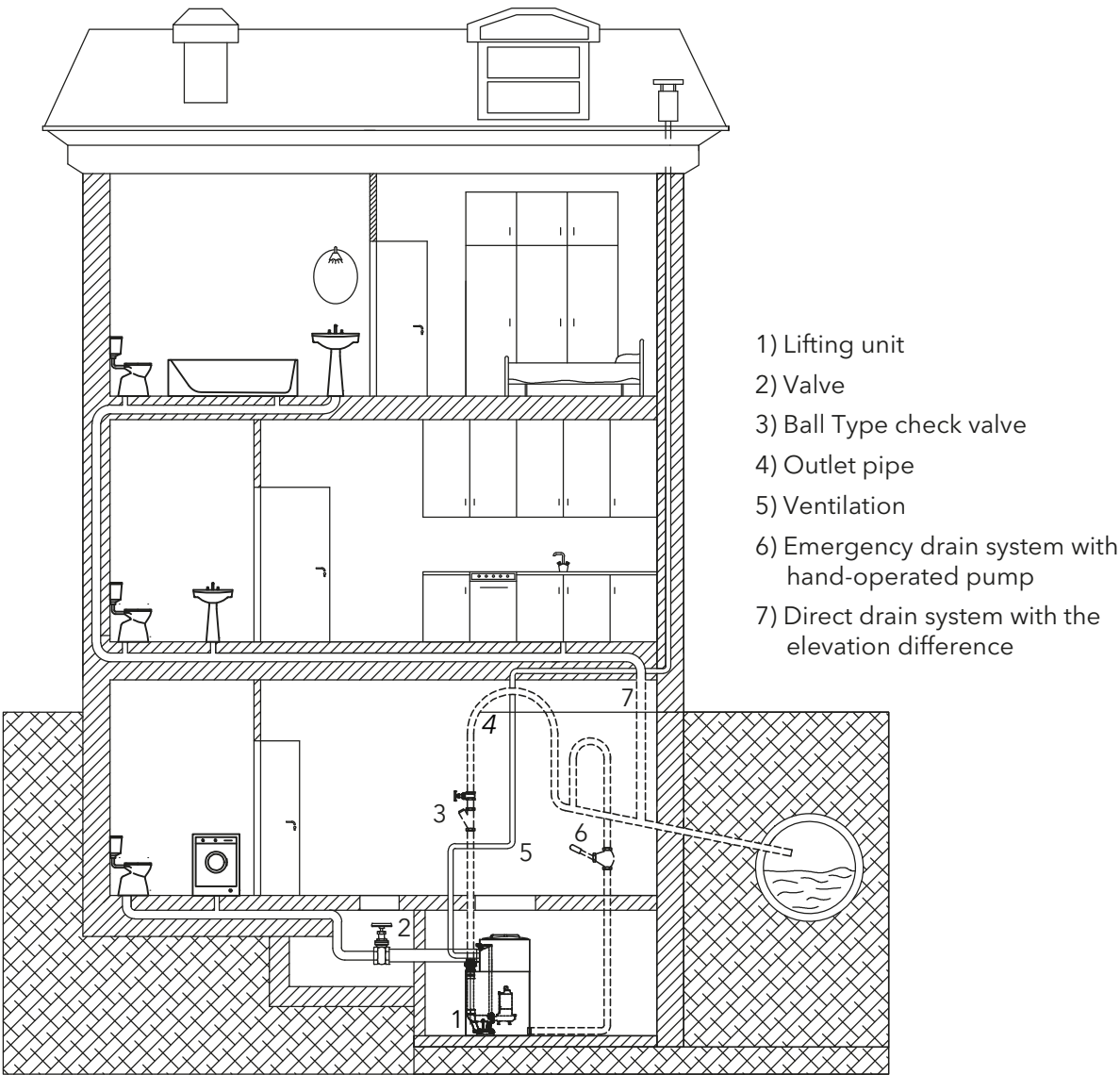
**Single Pump FOSDEP Technical Specifications**

- Capacity: 250 LT
- Pump: 1 unit (sold separately)
- Waste Water Inlet: 1 x DN 65
1 x DN 110
- Outlet: 1 x G2" PVC gasket type union
- 1 x R2" Manual hand pump outlet
- 1 x Sliding rail for easy assembly and maintenance
- 1 x HD Polyethylene cover
- Ball-Type Check Valve
- Weight: 36.3 kg

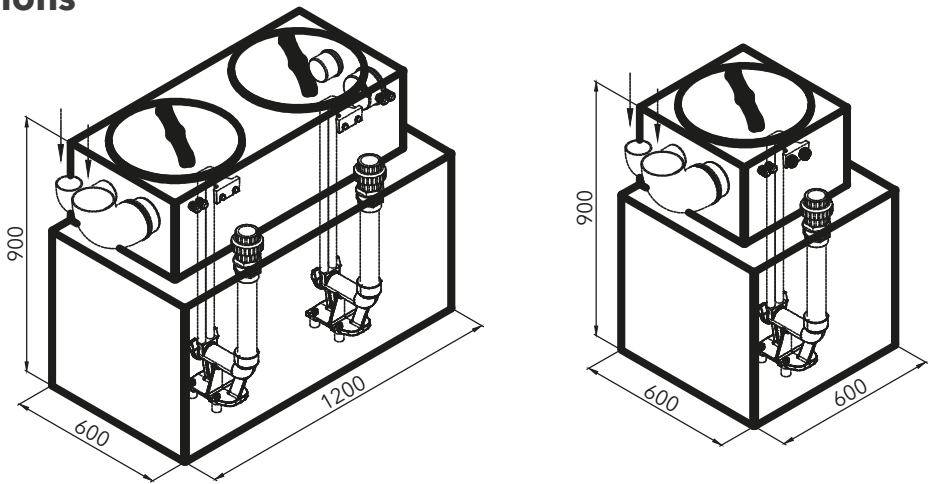
**Double Pump FOSDEP Technical Specifications**

- Capacity: 500 LT
- Pump: 2 unit (sold separately)
- Waste Water Inlet: 2 x DN 65
2 x DN 110
- Outlet: 2 x G2" PVC gasket type union
- 1 x R2" Manual hand pump outlet
- 2 x Sliding rail for easy assembly and maintenance
- 2 x HD Polyethylene cover
- Ball-Type Check Valve
- Weight: 72.5 kg

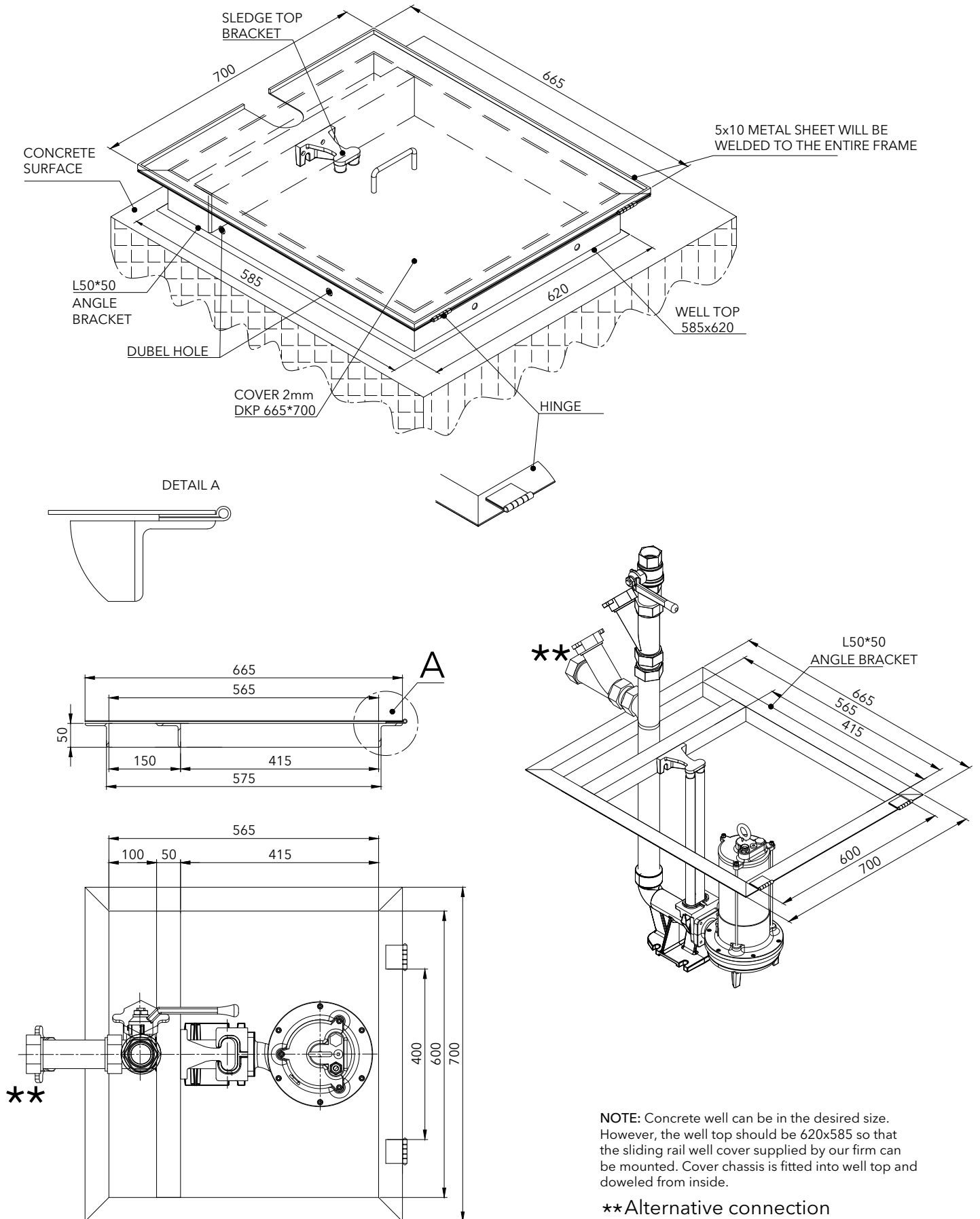
Building Application



Dimensions



Concrete Septic Tank and Waste Water Drainage Pump Installation Details with Sledge System





Dudullu Organize Sanayi Bölgesi 2. Cadde No: 14
34775 Ümraniye - İstanbul / Turkey
Tel : +90 216 561 47 74 (Pbx) • Fax : +90 216 561 47 50
www.etna.com.tr/en • info@etna.com.tr



ETNA®

0850 455 38 62
customer service